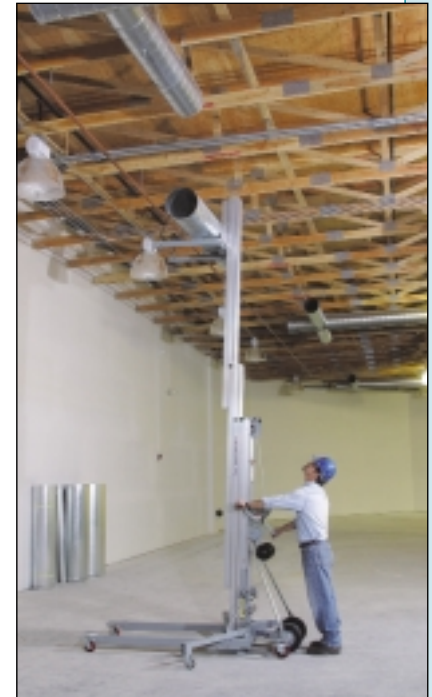


## SUPERLIFT CONTRACTOR

- Ideal tool for contractors and for positioning any high loads.
- Heavy duty design, yet lightweight and portable.
- Quick set-up requires no tools.
- Loads easily into a pickup truck for transporting.
- Rear transport wheel assembly.

Optional extras:

- Fixed front castor option.
- Two speed winch.
- Stabilizer set (standard on SLC-18 and SLC-24).
- Wide range of accessories.



REF	Cap Kg	Lift height mm	Width mm	Overall stowed size LxWxH mm	Weight Kg	PRICE
SLC12	82-295	3940	1680	864x800x2184	93	£1227.00
SLC18	73-295	5640	1680	864x800x2184	139	£1651.50
SLC24	73-295	7320	1680	864x800x2184	170	£1915.50

REF	Accessories	PRICE
SLC/W2	Two speed winch	£135.00
32564	Adjustable forks	£247.50
33667	Boom	£165.00
32550	Fork extensions	£225.00
32568	Load platform	£202.50
32569	Pipe cradle	£172.50

## MANUAL SUPERLIFT

The Superlift is a flexible lifting and positioning tool for construction and industrial applications. It is easily stored and transported and can be moved through narrow doorways.

- Standard or straddle base.
- Choice of 4 lift heights.
- Choice of forks: standard, adjustable and flat.
- Stabilisers for increased stability with heavy loads are standard on SLA20/25.
- Telescopic mast and fold up legs for easy storage.
- Interchangeable handling attachments.



The Superlift has a wide range of attachments like adjustable forks, drum grabs, flat forks, two speed winch plus the other popular ones priced below.



REF	Type	Cap Kg	Lift height mm	Overall stowed size LxWxH mm	Weight Kg	PRICE
SLA10	Standard base	454	3000	737 x 800 x 1994	118	£1801.50
SLA15		363	4500	737 x 800 x 1994	144	£2019.00
SLA20		363	5900	737 x 800 x 1994	184	£2194.50
SLA25		295	7400	737 x 800 x 1994	204	£2556.00
SLA10/SB	Straddle base	454	3000	737 x 800 x 1994	137	£1930.50
SLA15/SB		363	4500	737 x 800 x 1994	163	£2148.00

REF	Optional extras	PRICE
SLA/BA	Jib/boom attachment	£165.00
SLA/PC	Pipe cradle	£202.50
SLA/FE	Fork extensions	£225.00
SA/LP	Load platform	£202.50