

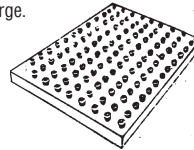
## BALL TRANSFER UNITS

Expertly constructed with large main contact ball seated on a quantity of small bearings in a hemispherical cup. Not just a single ring of balls. The main ball rotates freely and instantaneously in any direction.

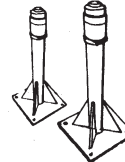
Extremely heavy loads can be moved in any direction with minimum effort. All units are fitted with a sealed washer and therefore self cleaning. Pre-lubricated - almost maintenance free. Some units provided with oiling points. Supplied in mild steel carbon units zinc plated or stainless steel throughout. Illustration right shows a wide variety of standard fixings available which enables them to fit to wood, metal, plastic, tube, slotted angle etc.

To determine ball unit capacity the weight of article to be conveyed should be divided by 3, the answer gives the maximum load which any single ball unit may have to bear. Spacing pitch of units is obtained by dividing the narrowest dimension by 3.5 this ensures 3 units beneath the narrowest dimension at any one time. (Enquire for additional ranges.)

• £50 min order charge.



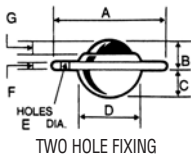
BALL TABLES



BALL STANDS

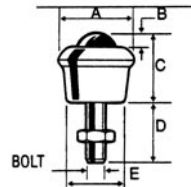


BALL CHANNELS



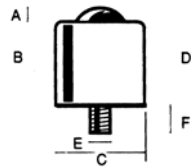
TWO HOLE FIXING

FLANGE FITTING BALL UNITS													
Ball Dia mm	Cap kg	Dimensions mm							Weight gms	Carbon Steel		Stainless Steel	
		A	B	C	D	E	F	G		REF	PRICE	REF	PRICE
19	25	61	10	12	29.50	5.5	3.2	3.2	80	300613	£4.44	300615	£13.75
25	55	73	14.2	15.8	38.1	5	3	6.3	175	100813	£5.43	100815	£15.37
32	125	73.75	16.25	19.9	46	5	4.25	8	260	102213	£9.59	102215	£25.06
40	140	89	21.45	24.6	55.5	7	6	8.75	480	201113	£23.21	201115	£45.24
50	340	121	28.27	30.16	76	8	6.3	14.3	1060	400113	£52.26	400115	£145.32
25	55	73	14.2	15.8	38.1	5.5	2	6.3	175	100613	£6.22	100615	£20.77



BOLT

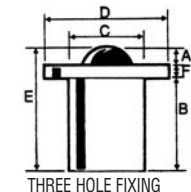
BOLT FITTING BALL UNITS												
Ball Dia mm	Cap kg	Dimensions mm					Bolt	Weight gms	Carbon Steel		Stainless Steel	
		A	B	C	D*	E			REF	PRICE	REF	PRICE
19	25	32.1	4.7	30.2	25&45	25.4	M8	80	300213	£5.91	300215	£18.29
25	55	39.7	6.3	39.7	23&43	25.4	M8	160	100313	£7.39	100315	£23.14
40	140	55.5	11.9	57	22&42	49	M10	460	200513	£23.55	200515	£70.89
50	340	89	14.30	76	75	89	M16	1720	400413	£131.19	-	-



A

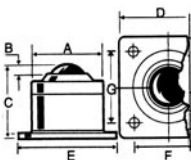
B

HEAVY DUTY BALL UNITS											
Ball Dia mm	Cap kg	Dimensions mm						Weight gms	Carbon Steel		
		A	B	C	D	E	F		REF	PRICE	
12.5	25	2	18	20	20	M6	25	42	051923	£15.02	
19	50	4	26	30	30	M8	25	124	301923	£27.57	
25	125	6	29	40	35	M8	40	204	101923	£36.03	
32	250	8	37	50	45	M10	40	510	102923	£50.44	
40	500	9	46	60	55	M12	50	916	201923	£66.73	



THREE HOLE FIXING

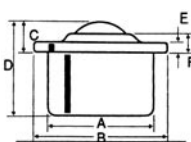
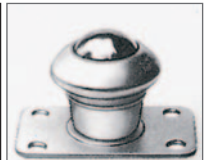
SPRING LOADED BALL UNITS											
Ball Dia mm	Cap kg	Dimensions mm						Weight gms	Carbon Steel		
		A	B	C	D	E	F		REF	PRICE	
19	30	3.5	51.6	36.5	66.6	63	7.9	420	301118	£73.95	
25	100	5.9	53.3	44.5	76.2	67.1	7.9	520	101818	£77.56	
32	180	7.5	77.5	58.7	89	94.6	9.5	1140	102818	£133.94	
40	170	8.2	90	69.8	101.6	107.6	9.5	1820	201018	£179.77	
50	408	13	114	101.6	152.4	139.2	12.75	5040	400818	£400.01	



B

C

PLATE FITTING UNITS													
Ball Dia mm	Cap kg	Dimensions mm							Weight gms	Carbon Steel		Stainless Steel	
		A	B	C	D	E	F	G		REF	PRICE	REF	PRICE
19	25	32.1	4.7	32.5	65.1	38	49.2	25.4	100	300513	£8.84	-	-
25	55	39.7	6.3	41.3	65.1	38	49.2	25.4	160	100513	£12.41	100515	£26.27
40	140	55.5	11.9	57	58.7	58.7	47.6	47.6	480	200313	£30.22	200315	£77.29
50	340	89	14.3	76	127	127	89	89	2100	400213	£144.98	-	-



C

D

EURO UNITS													
Ball Dia mm	Dimensions mm						Weight gms	Cap kg	Carbon Steel		Stainless Steel		
	A	B	C	D	E	F			REF	PRICE	Cap kg	REF	PRICE
15	24	31	9.5	21	2.8	6.3	38	45	515013	£5.33	35	515015	£13.82
22	36	45	9.8	30	2.8	5.5	132	120	522013	£7.74	90	522015	£18.53
30	45	55	13.80	37	4	8.3	265	230	530013	£14.37	175	530015	£40.50
45	62	75	19	53.5	4	10	720	550	545013	£38.37	-	-	-

