

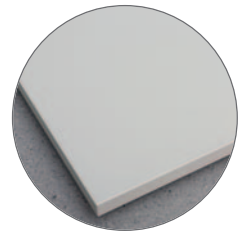
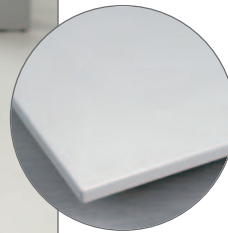
GENERAL PURPOSE BENCHES



TED ELECTRIC WORK DESKS

This electric height adjustable desk comes in four sizes and is available with either a standard 25mm thick laminate worktop or an electro static dissipative (ESD) one for use in electro protected areas (EPA). Suitable for use in assembly, packing, R & D and most office applications.

- Quick and silent adjustment from 630-1270mm for either sitting or standing tasks.
- Capacity 200kg.
- Add on upright tubes provide the ability to also add accessories to customise your desk - contact our sales team for full details.



Laminate Bench Top

- 25mm low pressure laminate.
- Light grey surface.
- Plastic edging.

ESD Bench Top

- Light grey laminate surface.
- Grey edging.
- Thickness 25mm.
- Semi-conductive (ESD).

Bench size W x D mm	LAMINATE		ESD LAMINATE	
	REF	PRICE	REF	PRICE
900 x 800	TED809-41	£1594.38	TED809-49	£1956.75
1100 x 800	TED811-41	£1630.62	TED811-49	£2065.47
1500 x 800	TED815-41	£1703.11	TED815-49	£2137.93
1800 x 800	TED818-41	£1775.57	TED818-49	£2282.86



TED815-41



Electric height adjustment



Shown with uprights, castors and accessories

Upright Tube Pair with a Flange

Upright tubes enable TED electric desk to be accessorised in many ways. Fitted onto the worktop with screws.

Size W x D x H mm	REF	PRICE
70 x 100 x 418	TTP400-49	£246.42
70 x 100 x 793	TTP790-49	£300.76

