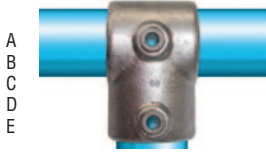


Minimum Order Value £30.00. Order your tube requirements from us as well as your tubeclamp fittings.

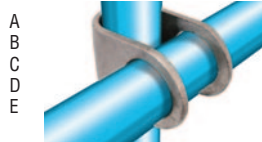
101 Short tee



138 Gate eye



160 Clamp on crossover



104 Long tee



140 Gate hinge



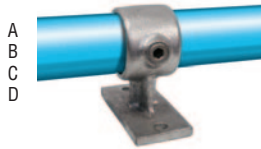
161 90° Crossover



116 Corner with through the centre tube



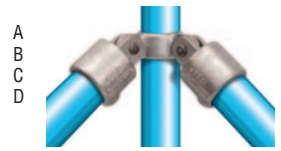
143 Handrail bracket



165 Combination socket tee and crossover



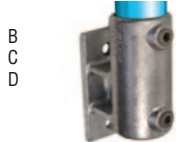
168 90° Corner swivel combination



119 Two socket cross with centre vertical tube



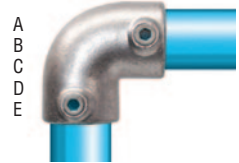
144 Railing side support vertical base



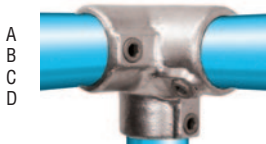
167 Double swivel combination



125 90° Elbow



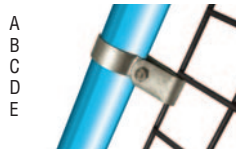
128 Three way 90° elbow



147 Internal swivel tee



170 Mesh panel clip



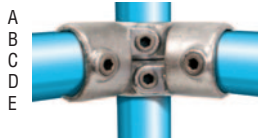
232 Keys



131 Base flange



148 Short tee swivel



171 Mesh panel clip



REF	To suit tube size O/D mm	PRICE
232ABC	26.9, 33.9, 42.4	£2.38
232DE	48.3 & 60.3	£3.65

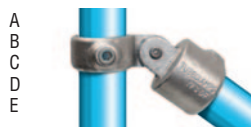
132 Railing base flange



149 Sleeve joint



173 Single swivel combination



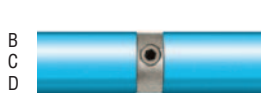
233 Ratchet with bit



133 Stop ends (plastic)



150 Internal joint



176 Side outlet tee

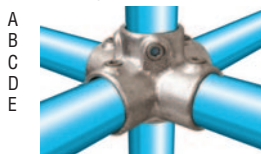


REF	To suit tube size O/D mm	PRICE
233	33.9 & 42.4 48.3 & 60.3	£80.22

135 Clamp on tee



158 Four way cross width centre tube



182 Hook



TUBE DETAIL			
REF	O/D mm	I/D mm	PRICE per 6.47m
TUBE/A	26.9	20	£127.83
TUBE/B	33.9	25	£82.34
TUBE/C	42.4	32	£101.35
TUBE/D	48.3	40	£118.57
TUBE/E	60.3	50	£289.14

*All tube ex-works prices
Standard length 6.47m
- also cut to length available

• QUALITY:

Castings manufactured to the higher standards of BS6681 (ISO5922) galvanised to BS729 (ISO1461).

• SERVICE:

If you are not sure our design service is at your disposal and will even design your project for you.