



Single gate



Double gate

SWING GATE BARRIERS

Highly appealing looks, suited to entrances to public and commercial buildings, car parks etc. All steel parts are hot dipped galvanised and powder coated red. The aluminium barrier arms are rectangular in section and finished in white with red reflective strips with an 'anti-sit' feature incorporated. The standard model comes equipped with cylinder locks and two keys per post. The barrier arms lock every 90° of rotation.

Pivot posts: 100 x 100 x 1000mm H.
 Base plates: 200 x 200 x 100mm (drilled 4 holes 13mm Ø).
 Alu-barrier arms: 90 x 60mm.
 Alu-struts: 60 x 30mm.
 Optional extras include:
 triangular key locking,
 keyed alike cylinder locks,
 customer supplied profile
 locks, sub-surface fitting.

- Choice of single or double gate versions.
- Highly visible barrier arm.
- All steel parts galvanised and powder coated.
- New improved locking options.
- KD construction for ease of transport.

SINGLE GATE BARRIERS			
REF	O/A width mm	Drive thru width mm	PRICE
225.24.432	2500	2205	£1273.63
225.24.693	3000	2705	£1305.02
225.29.755	3500	3205	£1335.46
225.29.724	4000	3705	£1450.56
225.28.929	4500	4205	£1461.22
DOUBLE GATE BARRIERS			
221.29.973	1250	1050	£1754.40
221.22.813	1750	1550	£1814.40
221.27.418	2250	2050	£1896.77
221.21.467	2750	2550	£1956.86
221.25.404	3250	3050	£2037.98



Shown with optional nudge bar



HEIGHT RESTRICTION BARRIERS

Strong steel and aluminium construction, ideal for restricting access to vans, commercial vehicles, caravans, motorhomes etc to car parks, traffic lanes etc. Comprising of two steel posts, hot dip galvanised and painted red and a white aluminium cross bar with red retro-reflective strips for day or night.

- O/A height: 3010mm.
- Posts: 100 x 3mm.
- Height is adjustable at 150mm increments up to 2500mm.
- Optional: concrete fixing, root fixing or nudge bars.

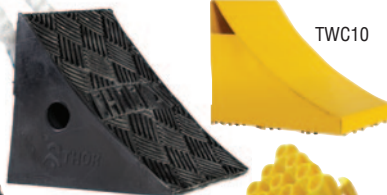
REF	O/A width mm	Drive thru width mm	Weight kg	PRICE
305.22.250	3230	3000	70	£1466.40
305.27.291	4230	4000	75	£1612.03
305.21.734	5230	5000	80	£1633.34
305.22.355	6230	6000	90	£1654.66
305.25.927	7230	7000	95	£2050.75
305.23.437	8230	8000	100	£2208.96
305.27.712	9230	9000	105	£2230.18
305.27.911	10230	10000	110	£2251.68

WHEEL CHOCKS

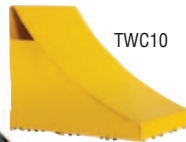
- Wide choice of six models.
- Ensure safe and secure parking.
- Safety grip surface - max adhesion between wheel and chock.
- Built-in lifting handles and anti-theft chain as option.
- All suitable for use with HGV except TWC-6 and TWC-9.



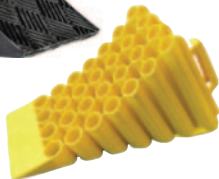
TWC3



TWC1



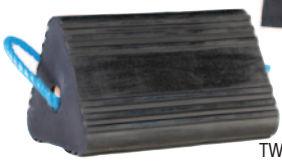
TWC10



TWC12



TWC2



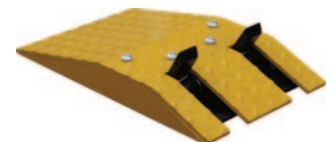
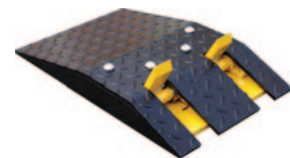
TWC6

REF	Description	L x W x H mm	Weight kg	PRICE
TWC-1	Moulded Wheel Chock	270 x 190 x 190	6	£53.55
TWC-2	Retaining Chain	5 metres long	1	£65.30
TWC-3	Cast Aluminium Chock	400 x 180 x 180	3.25	£115.25
TWC-6	Aircraft Chock	240 x 240 x 220	8.5	£171.25
TWC-9	Aircraft Chock	170 x 250 x 150	4.25	£121.50
TWC-10	Steel Chock	150 x 155 x 150	3.5	£50.22
TWC-12	Plastic HGV Chock	440 x 200 x 230	2	£45.03

TRAFFIC FLOW CONTROL PLATES

Designed to bear the load of cars and heavy goods vehicles. These surface mounted flow control plates use a heavy duty inbuilt sprung action to make sure that it returns to its upright position once a vehicle has travelled over it. Once installed these clever plates should help to maintain a one way flow of traffic and also aid in deterring traffic from the opposite direction.

- Manufactured from chequerplate steel.
- Finished in high vis yellow and black.
- Weight 26kg.
- Fixings included.



REF	Dimensions mm	PRICE
PF5875HD	510 x 300 x 105	POA